

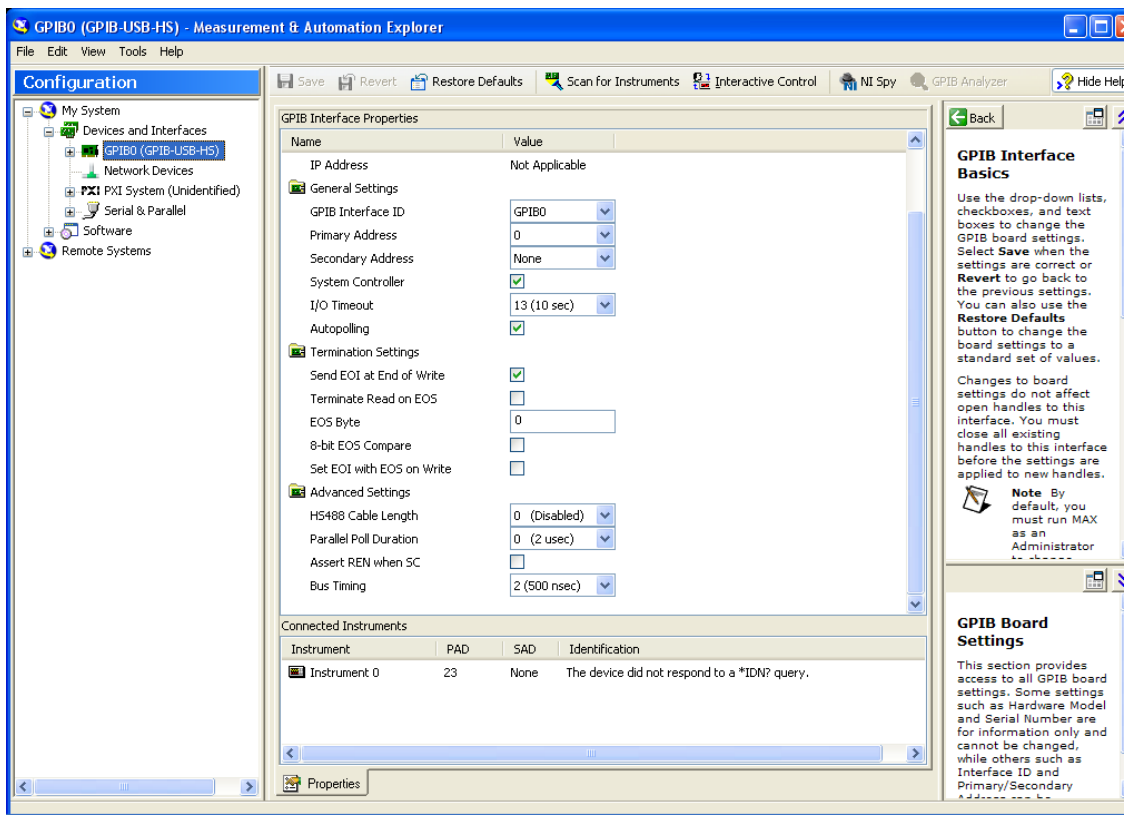


Instructions for using National Instrument Measurement & Automation Explorer with the SR510/SR530 Lock-In Amplifiers

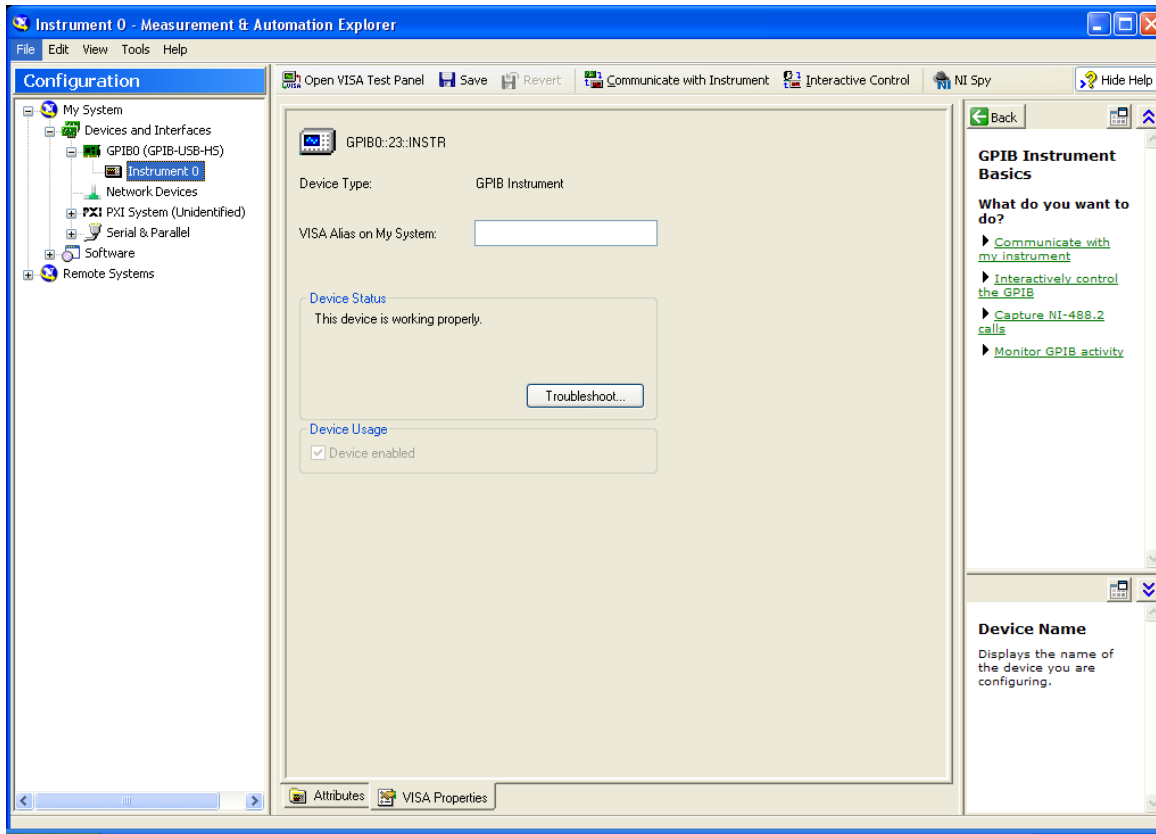
These instructions are for the default GPIB address of 23.

If using a National Instruments GPIB-USB-HS then you need to connect a standard GPIB cable (at least 1.5 meters in length) in between the National instruments connector and the SR510/SR530

1. Setup the SR530 for GPIB communication (see manual page8).
2. Start up **Measurement & Automation Explorer**
3. Select the + box next to “Devices and Interfaces”
4. Select “GPIB0 (GPIB-USB-HS)” or (PCI-GPIB)
5. On the upper menu click on “Scan for Instruments”
6. Double click on the instrument with address 23 (Bottom of the page section labeled “Connected Instruments”).



7. Select “Communicate with Instrument” on the top menu



8. In the Send String dialog box type “f”

9. Click on the Query button. The reference frequency should be displayed in the string received box. The example below shows a lock-in with no reference connected, reading of .000 E +3 Hz.

