

Keithley Instruments, Inc.
28775 Aurora Road
Cleveland, Ohio 44139
1-888-KEITHLEY
www.keithley.com

Firmware Revision Installation Instructions

To install updated firmware for the Model 2100:

NOTE You must have one of the following items installed on your computer in order to obtain the proper VISA layer (Keithley Instruments I/O Layer 5.0 is included on the CD-ROM that came with your Model 2100):

- NI-VISA 3.1 or greater

1. Connect your Model 2100 to your computer with the included USB cable.
2. Insert the Product Information CD-ROM that came with your Model 2100 into the CD drive of your computer (or navigate to the files you downloaded from the Keithley Instruments website) and double-click the **DmmUpdate.exe** file to begin the installation of the Model 2100 firmware update.
3. When the 2100 (USBTMC) Update Version window appears, click the **Select** button (see Figure 1-1).

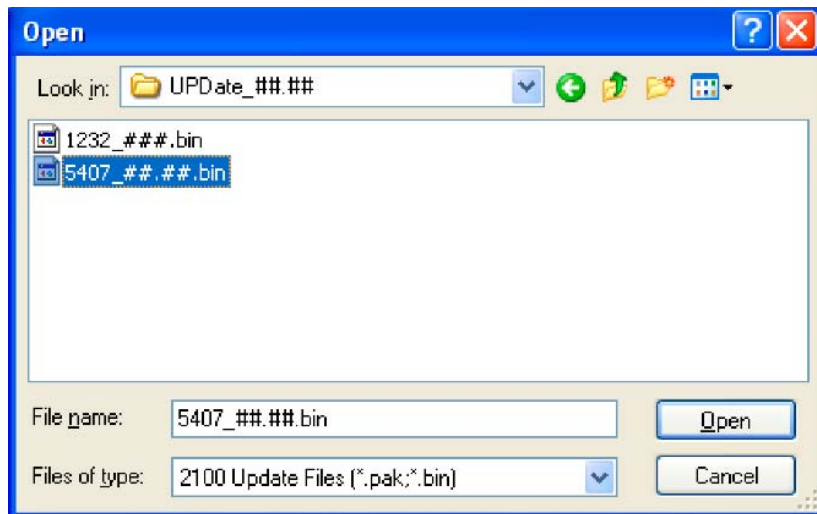
Figure 1-1
Installing the Model 2100 firmware update



4. The Open dialog box will appear. The files for the front-end firmware and the digital signal processor (DSP) updates are listed (see Figure 1-2):
 - 1232_xxx.bin Updates the front-end firmware version
 - 5407_xx.xx.bin Updates the DSP firmware version

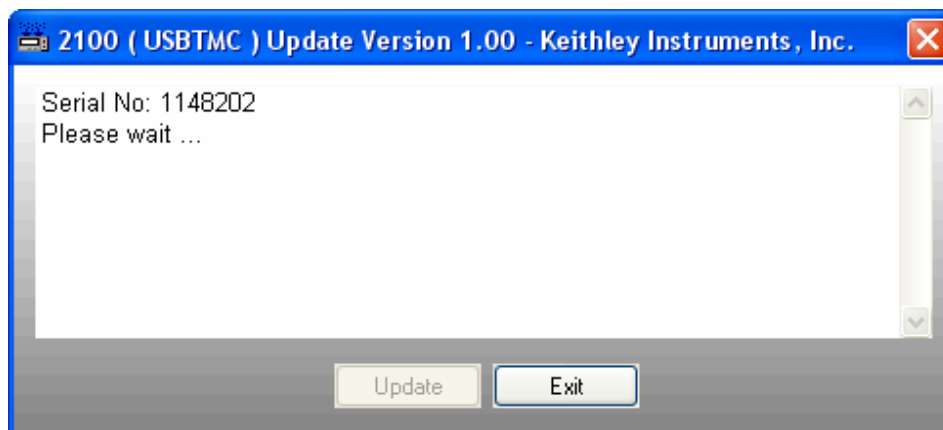
NOTE Filenames may vary, depending upon which version of firmware you are installing. The “xx.xx” and “xxx” in the filenames in this example represent alpha-numeric values that denote specific firmware revisions.

Figure 1-2
The Open dialog box



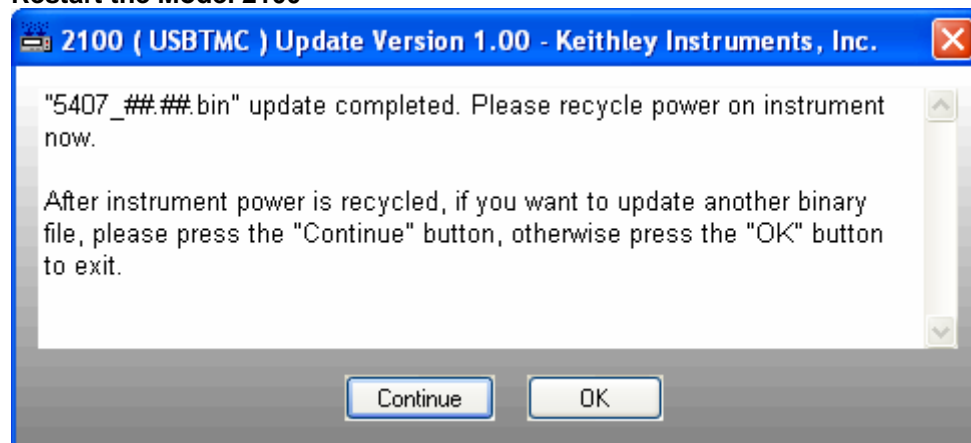
5. Highlight the **5407_xx.xx.bin** file and click **Open** (see Figure 1-2) to start the DSP firmware version update. The 2100 (USBTMC) Update Version window will display a "Please wait" message while the file is executing, as shown in Figure 1-3.

Figure 1-3
Model 2100 firmware upgrade in progress



6. Once installation of the DSP firmware update file is complete, you will be prompted to restart your Model 2100 to continue the update (see Figure 1-4). Power the Model 2100 off, and then power it on again.

Figure 1-4
Restart the Model 2100



NOTE An error message may appear on the front-panel display when you restart your Model 2100. If it does, you will need to click **Continue** and install the front-end firmware revision update file (1232_xxx.bin) following the procedures listed above.

If you do not receive an error message, you do not need to install the 1232_xxx.bin update file.

7. The 2100 (USBTMC) Update Version window will reappear when the installation is complete. Click **Exit** to exit the firmware update installation (see Figure 1-4).

To confirm the update has been properly completed, check the firmware revision:

1. Press the **MENU** key and then use the **PREV** and **NEXT** keys to select the **SYSTEM** submenu.
2. Press **ENTER**, then use the **PREV** and **NEXT** keys to select the **SYSTEM VER.** option.
3. Press **ENTER** to select it; a three-part code in xx-xx-xx format will appear on the display. The first part of the code, xx.xx, is the firmware version of the digital signal processor (DSP); the second code, xx, represents the panel microprocessor; and the last code, xx, indicates the front-end processor firmware version.