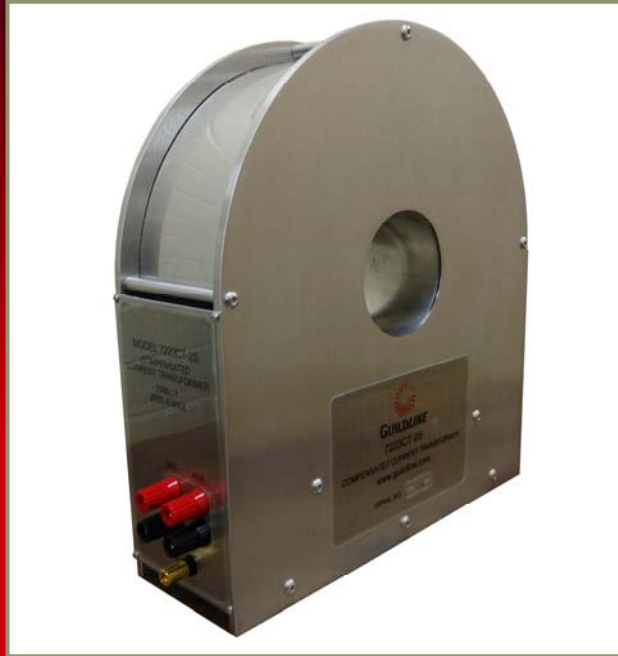


7223CT-2S Precision AC Current Transformer

Most Accurate High Current and High Voltage AC Measurement Transformer Available!



7223CT-2S FEATURES

- ◆ High Precision AC Current Measurements!
- ◆ Fixed Permanent Accuracy!
- ◆ Measurement Accuracy of 1 ppm at power frequencies for Both Ratio and Phase Angle!
- ◆ Stability Measurement better than 1 ppm!
- ◆ High Voltage Isolated Measurement capability when used with a suitable insulating bushing!
- ◆ High Accuracy with burdens up to 1 Ω !

Guildline's 7223CT-2S Series of Precision AC Current Transformers provides very accurate AC current measurements at high current and for high voltages. The 7223CT-2S 2000 A model on the left is designed with a 76.2 mm (i.e. 3 inch) diameter open window to allow the insertion of a high voltage insulating bushing as well as to pass a single cable, set of cables, or buss bar that carry the AC current to be measured. The 7223CT-2S AC Current Transformer produces an output current that varies directly with the input current with a ratio of 1000:1. The 7223CT-2S-HV High Voltage model has a ratio of 2000:1.

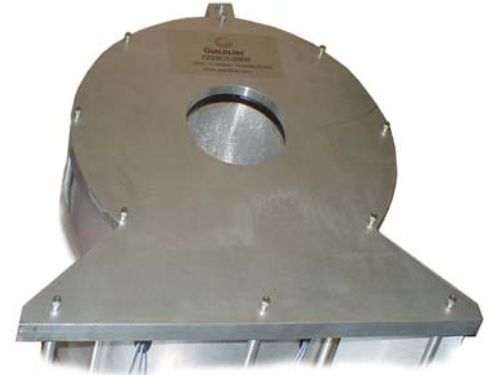
Both the 7223CT-2S and 7223CT-2S-HV make measurements of current up to a maximum of 2000 A. Other ratios are available with reduced accuracy on special order. The full scale output is provided through five way binding post connectors on the front panel.

The 7223CT-2S is part of the 7223CT Series which are the World's only Commercially Available High Precision, Low and High Voltage, AC Current Instruments Available Today Capable of part-per-million (ppm) Measurement Accuracy!

All 7223CT-2S Precision AC Current Transformers are packaged in a rugged metal enclosure.

7223CT-2S Precision AC Current Transformer

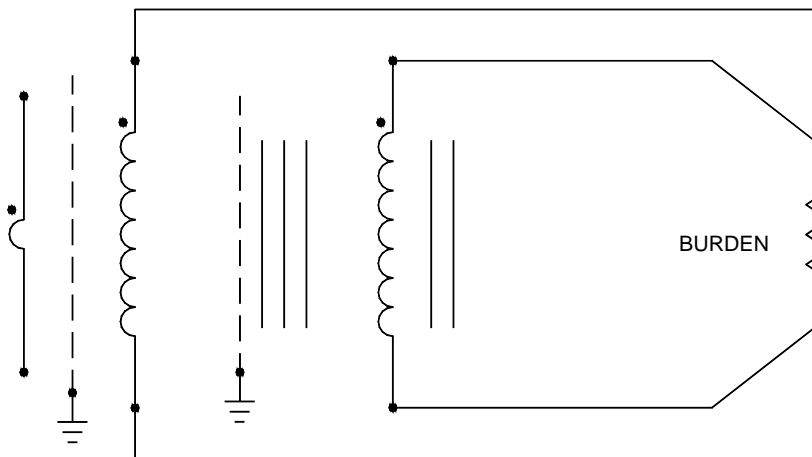
The 7223CT-2S-HV model is larger with a 152 mm, (6 in.) diameter open window to allow the insertion of larger high voltage insulating bushing as well as to pass a single cable, set of cables, or buss bar that carry the AC current to be measured. The larger open window size makes it easier to use high voltage bushings for the measurement. The winding configuration for the 7223CT-2S-HV model allows for 2000:1 ratio with up to 2000 A on the primary side of the CT.



THEORY OF OPERATION

The 7223CT-2S AC Current Transformer produces an output current that varies directly with the input current with a ratio of 1000:1. By the connection of a reference shunt burden on the output terminals the primary current can also be calculated from the measured voltage on the reference shunt with consideration of the 1000:1 ratio. The 7223CT-2S is also suitable for extending the current range of power meters and analyzers.

No adjustments of the 7223CT-2S AC Current Transformer are required for proper operation.



**Typical Transformer
Connections**

7223CT-2S Precision AC Current Transformer

7223CT-2S AC Current Transformer Specifications (3 Year)		
Uncertainty / Accuracy	In-phase	± 1 ppm
	Quadrature	± 1 ppm
Linearity	±0.1 ppm full scale	
Temperature Coefficient	±0.01 ppm/°C	
Test Current Range	7223CT-2S	± 2000 A
	7223CT-2S-HV	± 2000 A
Transformation Ratio	7223CT-2S	1000 : 1
	7223CT-2S-HV	2000 : 1
Secondary and Compensation Winding Breakdown Voltage	300 VAC	

General Specifications			
Temperature	Operating	15 °C to 30 °C	59 °F to 86 °F
	Storage	- 20 °C to + 60 °C	- 4 °F to 140 °F
Humidity	Operating	20 % to 70 % RH	
	Storage	15 % to 80 % RH	
Weight	36 kg	79 lbs	
Dimensions (H x D x W)	350 x 107 x 315 mm	13.8 x 4.2 x 12.4 in	
Weight – HV Model	136 kg	300 lbs	
Dimensions – HV Model (H x D x W)	592 x 180 x 559 mm	23.3 x 7.1 x 22.0 in	

ORDERING INFORMATION	
7223CT-2S	2000 Ampere AC Current Transformer
7223CT-2S-HV	2000 Ampere AC Current Transformer, High Voltage
/OM	Operation Manual (Included)
/CC	Certificate of Conformance (Included)
Available Options Include:	
Higher Current Models are Available – Contact Guildline	

GUILDLINE IS DISTRIBUTED BY:

Guildline Instruments Limited
 21 Gilroy Street, PO Box 99
 Smiths Falls, Ontario
 Canada, K7A 4S9
 Phone: (613) 283-3000
 Fax: (613) 283-6082
 Web: www.guildline.com
 Email: sales@guildline.com